

iPulse S

WIRELESS PulseNET™
SERIAL-ETHERNET
GATEWAY



Example Application



**Configuring, Controlling
and Monitoring your Encom
equipment is EASY with
ControlPAK and Pulse Link!**



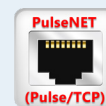
The iPulse S is a gateway between a Pulse wireless serial system and an IP-based LAN network.

With iPulse S in the system, users can bring their remote legacy serial systems "online" with any existing IP network.

Commonly used in municipal traffic systems, the iPulse S provides a smooth migration path to the latest IP network for existing serial-based traffic controllers.

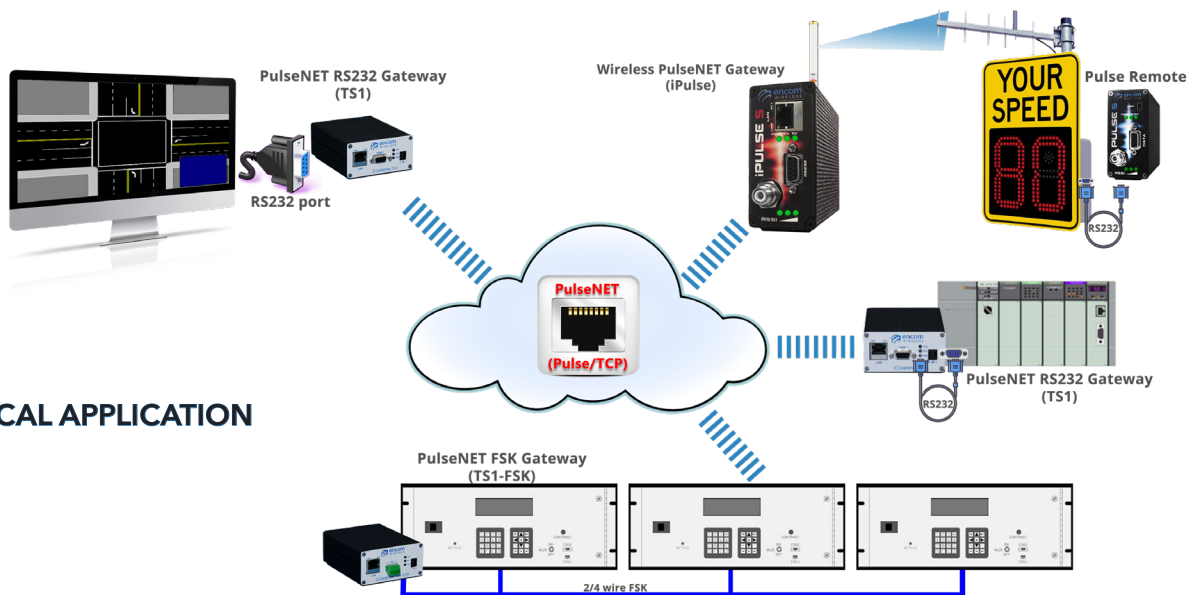
KEY FEATURES

- Range of up to 20 miles line-of-sight
- Full 1-Watt transmitter
- 902-928 MHz operating frequency
- Effortless IP network migration
- Extensive suite of security features
- Compatible with Encom Pulse serial radios and PulseNET-enabled products including TS1 and TS-FSK serial gateway devices
- Supports cellular connection
- AES 128-bit encryption
- Low power consumption
- Intuitive Pulse Link configuration and diagnostic software



www.encomwireless.com





TYPICAL APPLICATION

GENERAL SPECIFICATIONS

Input Power	6-30 VDC
Power Consumption	125 mA @ 12 VDC
LED indicators	PWR, RSSI, TXD, RSD
Operating Temperature	-40°F to 176°F (-40°C to 80°C), up to 95% humidity RHNC
Enclosure	Milled aluminum, black powder coated, 4.75" W x 1.73" H x 3.75" D
Weight	20 oz.

RADIO SPECIFICATIONS

Technology	Frequency-hopping spread spectrum (FHSS)
Frequency Range	902-928 MHz, License-free ISM Band
Operating Mode	Master
Configuration	Point-to-Multipoint
Available Hop Pattern	64
Number of RF Channels	128
Output Power	1 mW, 10 mW, 100 mW, 1W
Receiver Sensitivity	-110 dBm @ 10-6BER
Error Checking	32-bit CRC
Encryption	32-bit proprietary or 128-bit AES
Antenna Port	RP TNC-F
Certification	FCC, Industry Canada

CONNECTIVITY

Programming port	USB 2.0, Mini-B Receptacle
900 MHz Radio	Yes
Configuration, Monitoring & Control	Stratos Elite and ControlPAK
Protocol	Proprietary

ORDERING OPTIONS

- **iPULSE S:** Wireless Serial-to-Ethernet PulseNET Gateway, 902-928MHz

**ENCOM radios require professional installation.*

Specifications subject to change without notice. Visit www.encomwireless.com for updates.

© 2020 Encom Wireless Inc. All Rights Reserved.