

COMMPAK TS1

RS232-to-Ethernet
PulseNET™ Gateway

The **TS1** is a gateway between a serial device and an IP-based LAN network.

With TS1 in the system, users can bring their remote legacy serial systems online with any existing IP network.

Commonly used in municipal traffic systems, the TS1 provides a smooth migration path to the latest IP network for existing serial-based traffic controllers, allowing legacy serial hardware and software to be maintained.



Example Application

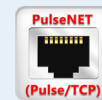


*Configuring, Controlling
and Monitoring your Encom
equipment is EASY with
ControlPAK!*



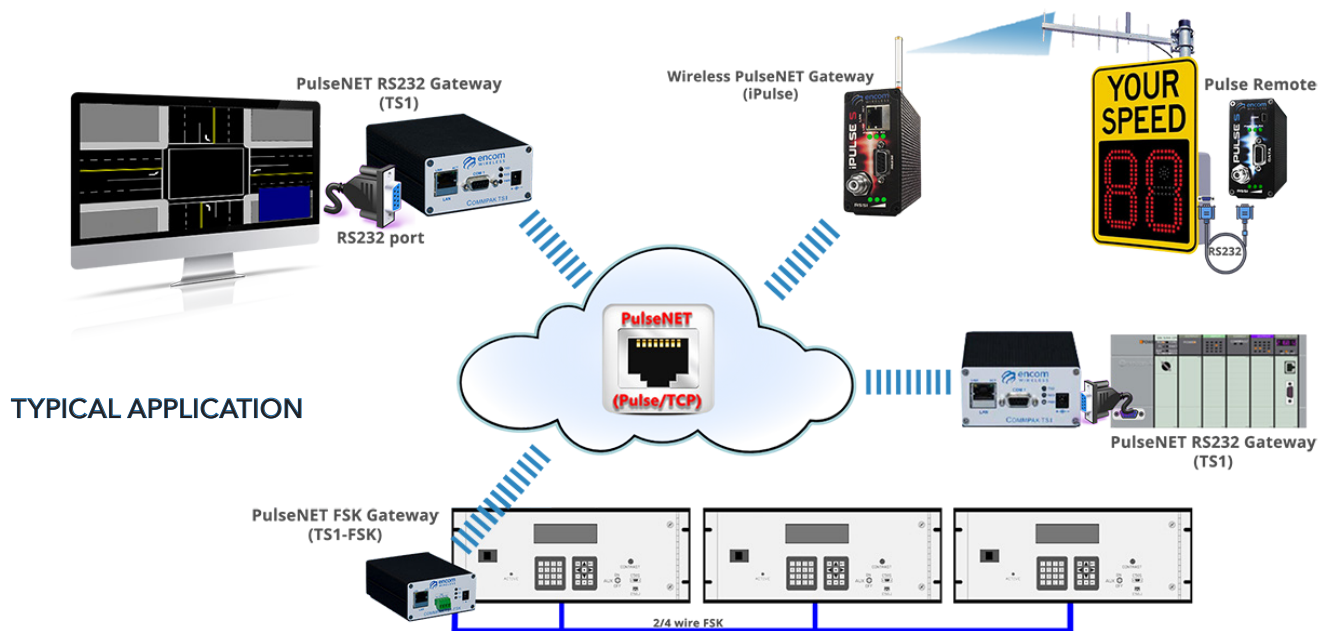
KEY FEATURES

- Effortless IP network migration
- Uses proprietary PulseNET protocol for low latency serial-over-IP communication
- Compatible with Encom Pulse serial radios and PulseNET-enabled products including iPulse and TS1-FSK wireless serial gateway devices
- Proprietary 32-bit or AES 128-bit encryption
- Small device footprint adapts easily to any equipment cabinet
- Supports cellular connection
- Low power consumption
- Intuitive ControlPAK configuration and diagnostic software



www.encomwireless.com

encom
WIRELESS



TYPICAL APPLICATION

GENERAL SPECIFICATIONS	
Input Power	6-30 VDC
Power Consumption	75 mA @ 12 VDC
LED indicators	PWR, LAN port LINK/ACT, Serial port TXD/RXD
Operating Temperature	-40°F to 176°F (-40°C to 80°C), up to 95% humidity RHNC
Enclosure	Milled aluminum, black powder coated, 4.75" W x 1.73" H x 3.75" D
Weight	12 oz.
SERIAL PORT SPECIFICATIONS	
Serial Port	1
Connector	DB9-F
Interface	RS232 / RS422 / RS485 Asynchronous
Supported pins in RS232	TXD / RXD / RTS / CTS / DCD
Baud Rate	300 / 600 / 1200 / 2400 / 5800 / 9600 / 19200 / 38400 / 57600 / 115200
Data Format	8N1 / 8N2 / 8E1 / 8O1 / 7E1 / 7O1 / 7E2 / 7O2
Handshaking	None or Hardware
Encryption	32-bit proprietary or 128-bit AES
NETWORK PORT	
Ethernet Port (10/100Base-T)	1
Protocol	TCP / UDP / ARP / ICMP / DHCP / HTTP / FTP
Encryption	32-bit proprietary or 128-bit AES
Encom PulseNET	Yes
Configuration, Monitoring & Control	ControlPAK
ORDERING OPTIONS	
<ul style="list-style-type: none"> TS1: RS232-to-Ethernet PulseNET Gateway 	

*ENCOM radios require professional installation.
 Specifications subject to change without notice. Visit www.encomwireless.com for updates.
 © 2020 Encom Wireless Inc. All Rights Reserved.