

E-LITE 900P

Wireless Ethernet Radio



KEY BENEFITS

- ✓ Better RF signal propagation
- ✓ Highly resilient signal frequency
- ✓ Configurable channel widths
- ✓ Scalable technology platform
- ✓ Reliable connectivity
- ✓ Unparalleled software management tools
- ✓ Works seamlessly with **STRATOS**

Encom's E-LITE solutions provide the flexibility to quickly and easily deploy a fast and efficient wireless ecosystem. Features such as adaptive radio modulation, software-defined channel size of 5 to 20 MHz, traffic prioritization, and COFDM technology make the E-LITE 900P highly resilient to RF interference.

The E-Lite 900P offers the "best-in-class" data transmission rates while employing robust security protocols such as WPA, WPA2, TKIP, AES, MAC and RADIUS authentication to bring enhanced security to your network.

*Visualize, Control and Monitor your
Encom Wireless Network with*

STRATOS

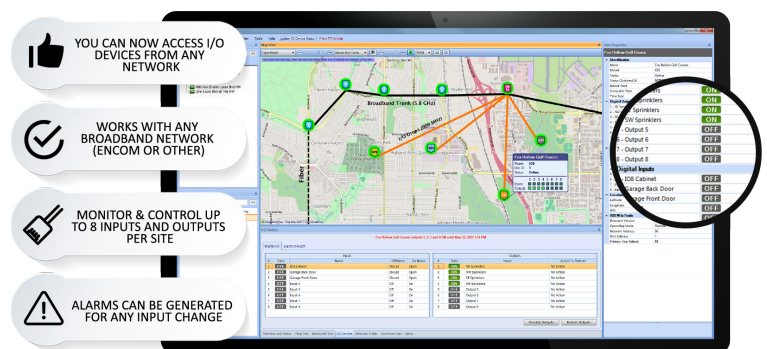
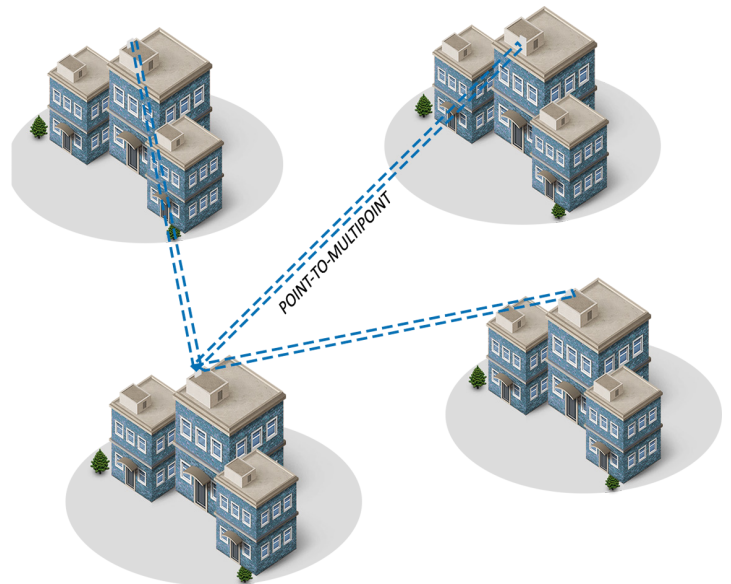
www.encomwireless.com

HIGH-PERFORMANCE. RUGGEDNESS. RELIABILITY.

The **E-Lite 900P** industrial wireless ethernet radio fills the gap in marketplace created by the lack of high speed 900 Mhz units available. This new addition to the E-Lite family of products takes advantage of the robust and license free 900 MHz band and is engineered with throughput speeds of up to 50 Mbps. When paired with our TS1 serial gateway, the E-Lite 900P can provide control of serial devices such as Variable Message Signs (VMS).

Backed by unmatched customer service and warranty, our radios offer features such as:

- Adaptive radio modulation
- Channel size of 5 to 20 MHz
- Enhanced security protocols
- Noise-resilient COFDM technology
- Advanced QoS + Traffic Prioritization
- IP67 Weather Protection Rating
- Received Signal Strength Indicator
- Up to 50 Mbps throughput
- Proprietary eMax protocol



STRATOS Software



E-LITE 900P

PHYSICAL SPECIFICATIONS

INTEGRATED ANTENNA UNIT	
Dimensions:	15.4" x 15.4" x 4.5"
Weight:	5 lb.
Environmental:	IP67 Weather Protection Rating
Antenna Type:	Antenna Integrated, 900MHz 13 dBi
Operating Temperature:	-40°F to +176°F @ 95% humidity RHNC
Number of Radio Units:	1

WIRELESS INTERFACE

Frequency Range	902-928 MHz
Peak Transmit Power	27 dBm (500 mW)
Receive Sensitivity	-96 dBm to -79 dBm
Channel Widths	5 MHz, 10 MHz, 20 MHz
Modulations	COFDM, BPSK, QPSK, 16QAM, 64QAM
Protocol	E-max (proprietary)
Data Rate	Up to 50 Mbps (lab tested)
MIMO	1x1
Topology	Point-to-Point, Point-to-Multipoint
RF Connector	Integrated Antenna

GENERAL SPECIFICATIONS

Power	18-24 VDC Passive PoE
Consumption	14W
	14W
	16W
Reset to Default	Built-in button
Alignment	Built-in LED Alignment: 4 Level LED Strip (-60 to -100 dBm)

IEEE WIRELESS NETWORKING & SECURITY FEATURES

- Compression
- Dynamic Ack Timeout
- TLS EAP Method
- Pass-through EAP Method
- Hardware Retries
- Preamble Mode
- Periodic Calibration
- Disconnect Timeout
- On-fail Retry
- CSMA Disable
- Station Channel Scan List
- EMAX proprietary protocol
- 802.11i-WPA-PSK
- 802.11i-WPA2-PSK
- 802.11i-WPA-EAP
- 802.11i-WPA2-EAP
- 802.11i-TKIP
- 802.11i-AES-CCM
- 802.11i-802.1x
- 802.11i-RSN
- Radius Authentication
- MAC Access Control List
- FCC 15.247
- IC RSS-210
- RoHS Compliant

ORDERING OPTIONS

- **E-Lite 900P:** Pole mounted integrated 900 MHz broadband radio

IEEE STANDARDS

802.11e	WMM and QOS
802.11h	DFS and TPC
802.1d	Ethernet Bridging
802.1p	Traffic Prioritization
802.1q	VLAN
802.1s	Spanning Tree
802.1w	Rapid Spanning Tree
802.3ab	Gigabit Ethernet
802.3ac	Extended Frame Size for 802.1q & 802.1p support
802.3ad	Link Aggregation/Port Bonding/Port Tracking
802.3i	10 Mbps Ethernet
802.3u	100 Mbps Ethernet and Auto-Negotiation
802.3x	Full Duplex and Flow Control
802.1ad	Service Tags
IGMP	Internet Group Management Protocol v1, v2

ADDITIONAL NETWORKING FEATURES

- OSPF
- FTP/TFTP
- HTTP
- Telnet
- SSH
- SNMP
- Syslog
- Routing
- Firewall/NAT
- NTP
- VPN
- DHCP Client/Server

ENCOM STRATOS I/O (free control/monitoring software included)

- Can now access I/O devices from any network
- Works with any broadband network (ENCOM or other)
- Profile-based configurations with SQL database
- Real-time signal strength and connection quality monitoring with user-defined color-coded link status
- Built-in bandwidth test, network traffic monitoring and spectrum scan tools
- System-wide Ping tool
- Radio Discovery with remote radio IP change capability
- Network mapping with automatic geolocation for GPS enabled units
- User-defined email alerts for changes to online status, decreased signal levels (dBm), connection quality and fluctuations in data rate
- Streamlined device programming and ability to manage all devices from a central location

**ENCOM Broadband radios require professional installation.
Specifications subject to change without notice. Visit www.encomwireless.com for updates.
© 2021 Encom Wireless Inc. All Rights Reserved.*

Email: sales@encomwireless.com
Toll Free: 1.855.730.1122
Phone: 1.403.230.1122
#7, 640 42nd Ave NE Calgary, AB T2E 7J9
Web: www.encomwireless.com

